

## ASTERIA TOILES ANTI-CHALEUR

### Description

Les toiles Asteria sont à base de fibre de verre texturée et caramélisée (2 côtés)

### Utilisation

Température de 550 °C en continu et 600 °C en pointe.

### Informations techniques utilisateurs

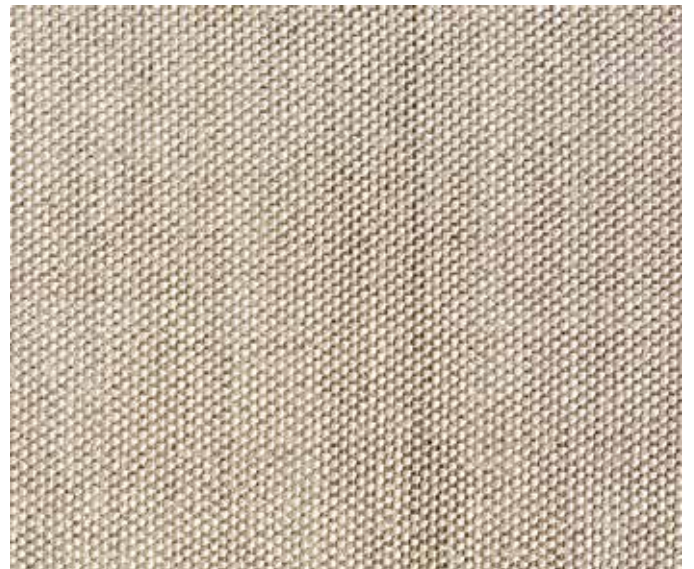
- CEPRO recommande l'utilisation de plusieurs couches de matériaux pour une protection optimale.
- Toujours utiliser les toiles soudure en observant un angle d'au moins 15°.
- Les températures de résistance mentionnées le sont uniquement à titre indicatif. Nous recommandons toujours d'effectuer un test préalable avec le produit sélectionné.
- Vérifiez régulièrement que des déchirures ou autres dommages n'apparaissent pas sur vos toiles. Remplacez vos toiles endommagées si nécessaire.
- Les toiles soudures peuvent être utilisées pour plusieurs usages et pour cela, aucune garantie ne peut être donnée quant à leur utilisation. L'utilisateur est responsable pour déterminer si une toile soudure convient à son utilisation dans une situation spécifique et si elle offre une protection suffisante permettant au travail d'être effectué.
- Les toiles soudure CEPRO sont finies 4 côtés avec une couture en fil kevlar haute qualité pour les bords coupés.

### Caractéristiques

La toile Asteria est adaptée à un usage polyvalent. Elle est fabriquée à partir de fibres de verre de 9 microns permettant d'obtenir une solution thermique et acoustique à la fois efficace et économique. Les applications pour ce tissu sont les suivantes: isolant thermique, rembourrage, gaine amovible, couvertures isolante, toile de soudure et autres systèmes de gestion d'incendie. La toile Asteria ne contient pas d'amiante.

### Dimensions disponible

Asteria toile anti-chaleur, 200 x 100 cm	56.53.72
Asteria toile anti-chaleur, 200 x 200 cm	56.53.75
Asteria toile anti-chaleur, 200 x 300 cm	56.53.76
Partie du rouleau, largeur 100 cm	56.53.07.1000
Rouleau complet 25 ml, largeur 100 cm	56.53.07.1025
Sur mesure, côtes coupés finis	56.53.70



## ATHOS WELDING BLANKET



**CREPIM**  
 Société par Actions Simplifiée -792 178 816 R.C.S. ARRAS  
 Siège social : Parc de la Porte Nord - rue Christophe Colomb.  
 62700 BRUAY LA BUISSIÈRE France  
 Tél.: 03.21.61.64.00 Fax : 03.21.61.64.01  
 E-mail : [contact@crepim.fr](mailto:contact@crepim.fr) www.crepim.fr  
 SIRET 792 178 816 00015 / APE 7112B / T.V.A. FR85 792 178 816

Autrement dit / *In other words*, A1

<b>Classement de réaction au feu / Reaction to fire classification :</b>	<b>A1</b>
--	-----------

### 4.3 Champ d'application / *Field of application*:

Le présent classement est valable pour les paramètres suivants liés au produit / *The classification is valid for the following product parameters* :

Composition :	Aucune variation autorisée / <i>No variation allowed</i>
Épaisseur / <i>Thickness</i> :	0.75 mm
Masse surfacique / <i>Surface density</i> :	0.58 kg/m <sup>2</sup>
Face exposée / <i>Exposed face</i> :	Faces identiques / <i>Identical faces</i>
Couleur / <i>Color</i> :	Beige / <i>Beige</i>

Le classement est valable pour les conditions d'utilisation finale suivantes / *The classification is valid for the following end-use condition*:

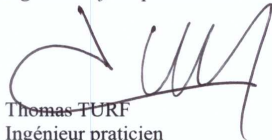
Support / *Substrate* : Sans substrat / *Without substrate*.  
 Fixation / *Mounting method*: Sans fixation / *Without fixation*.

### 5. Restrictions / *Limitations*

Le présent document de classement ne constitue ni une approbation de type ni une certification du produit.  
*This classification document does not represent type of approval or certification of the product.*

#### Signé

Signature de la personne qui effectue le classement  
*Signature of the person who realize the classification*



Thomas TURF  
 Ingénieur praticien  
 Test engineer

#### Approuvé

signature de la personne autorisant le présent rapport  
*Signature of the person who authorize the report*



Skänder KHELIFI  
 Responsable Technique  
 Technical Manager

Pour déclarer, ou non, la conformité à la spécification, il n'a pas été tenu explicitement compte de l'incertitude associée au résultat  
 Whether or not to declare compliance with the specification, the uncertainty associated with the result was not explicitly taken into account  
 La reproduction de ce rapport d'essai n'est autorisée que sous sa forme intégrale  
 Reproduction of this test report is only permitted in its full form  
 Le CREPIM ne peut être tenu responsable des informations relatives à l'élément testé. Ces informations sont fournies par le demandeur.  
 CREPIM cannot be held responsible for information relating to the tested element. This information is provided by the applicant

## ASTERIA WELDING BLANKET

### 1. IDENTIFICATION OF THE SUBSTANCE / PREPARATION AND COMPANY

<b>Product description</b>	Glass fibre material		
<b>Manufacturer / Supplier</b>	<b>Cepro International BV</b> Provinciënbaan 16 NL-5121 DL RIJEN The Netherlands	<b>Date of issue</b>	February 2014
	Tel. no. for information / emergency		+31 (0)161 22 64 72
	Fax no. for information / emergency		+31 (0)161 22 49 73

### 2. HAZARD INFORMATION

#### Classification of the substance or mixture

#### Classification according to Regulation (EC) No 1272/2008 [CLP]

Not determined

#### Classification according to Regulation 67/548/EEC or 1999/45/EC

No classification

#### Label elements

The product does not require a hazard warning label in accordance with EC-directives. This product is an article and therefore it does not require labelling according to EC directives/GefStoffV.

#### Other hazards

#### Physico-chemical hazards

no particular hazards known.

#### Environmental hazards

no particular hazards known.

#### Other hazards

none

### 3. COMPOSITION / INFORMATION ON INGREDIENTS

Range [%]	Substance
85-100	glass
	CAS:65997-17-3, EINECS/ELINCS: 266-046-0

Comment on component parts	No dangerous components. Substances of Very High Concern - SVHC: substances are not contained or are below 0,1 %.
----------------------------	--

### 4. FIRST AID MEASURES

#### Description of first aid measures

**General information** Change soaked clothing.

**Inhalation** Ensure supply of fresh air. In the event of symptoms refer for medical treatment.

**Skin contact** When in contact with the skin, clean with soap and water. Consult a doctor if skin irritation persists.

**Eye contact** In case of contact with eyes rinse thoroughly with plenty of water and seek medical advice.

**Ingestion** Not applicable

#### Most important symptoms and effects, both acute and delayed

No information available

#### Indication of any immediate medical attention and special treatment needed

Treat symptomatically  
Forward this sheet to the doctor.

## ASTERIA WELDING BLANKET

### 5. FIRE-FIGHTING MEASURES

<b>Suitable extinguishing media</b>	Product itself is non-combustible. Fire extinguishing method of surrounding areas must be considered.
<b>Extinguishing media that must not be used</b>	None.
<b>Special hazards arising from the substance or mixture</b>	Unknown risk of formation of toxic pyrolysis products.
<b>Advice for fire-fighters</b>	not applicable Fire residues and contaminated fire-fighting water must be disposed of in accordance with the local regulations.

### 6. ACCIDENTAL RELEASE MEASURES

<b>Personal precautions, protective equipment and emergency procedures</b>	Avoid dust formation. Use breathing apparatus if exposed to dust.
<b>Environmental precautions</b>	Not applicable
<b>Methods and material for containment cleaning up</b>	Dispose of absorbed material in accordance with the regulations. Take up mechanically.
<b>Reference to other sections</b>	See section 8+13

### 7. HANDLING AND STORAGE

<b>Precautions for safe handling</b>	With mechanical processing however fibers can be set free. Avoid the formation and depositions of dust. Provide vacuuming if dust raised. Dust deposits that cannot be avoided must be taken up regularly.  Wash hands before breaks and after work. Use barrier skin cream take off contaminated clothing and wash before reuse.
<b>Conditions for safe storage, including any incompatibilities</b>	No special measures necessary.
<b>Specific end use(s)</b>	See product use. section 12

### 8. EXPOSURE CONTROL / PERSONAL PROTECTION

<b>Control parameters</b>	
<b>Ingredients with occupational exposure limits to be monitored (GB)</b>	
Range [%]	Substance
85-100	glass CAS: 65997-17-3, EINECS/ELINCS: 266-046-0 Long-term exposure: TLV-TWA: 1 f/cc (respirable): 5 mg/m <sup>3</sup> (inhalable) (ACGHIH)
<b>Exposure controls</b>	
<b>Additional advice on system design</b>	Ensure adequate ventilation on workstation To pay attention to dust limit value (ACGHI-2011: 10 mg/m <sup>3</sup> particle inhalable; 3 mg/m <sup>3</sup> particle respirable).
<b>Eye protection</b>	Safety glasses
<b>Hand protection</b>	The details concerned are recommendations. Please contact the glove supplier for further information. Leather (EN 388).
<b>Skin protection</b>	Long-sleeved work clothes.

## ASTERIA WELDING BLANKET

<b>Other</b>	Avoid contact with eyes and skin. Do not inhale dust. Personal protective equipment should be selected specifically for the working place, depending on concentration and quantity of the hazardous substances handled. The resistance of these equipments to chemicals should be ascertained with the respective supplier.
<b>Respiratory protection:</b>	Breathing apparatus in the event of high concentrations. Short term: filter apparatus, filter P2.
<b>Thermal hazards</b>	No information available
<b>Delimitation and monitoring of the environmental exposition:</b>	not determined

### 9. PHYSICAL AND CHEMICAL PROPERTIES

<b>Form</b>	Solid in different forms.	<b>Vapour pressure (kPa)</b>	Not applicable.
<b>Colour</b>	Various.	<b>Density (g/m)</b>	Not determined.
<b>Odour</b>	Odourless.	<b>Bulk density (kg/m<sup>3</sup>)</b>	Not applicable.
<b>pH-value</b>	Not applicable.	<b>Solubility in water</b>	Immiscible.
<b>pH-value, 1 %</b>	Not applicable.	<b>Partition coefficient: n-octanol / water</b>	Not applicable.
<b>Boiling point (°C)</b>	Not applicable.	<b>Viscosity</b>	Not applicable.
<b>Flash point (°C)</b>	Not applicable.	<b>Relative vapour density determined in air</b>	Not applicable.
<b>Flammability (°C)</b>	Not applicable.	<b>Evaporation speed</b>	Not applicable.
<b>Lower explosion limit</b>	Not applicable.	<b>Melting point (°C)</b>	Not determined.
<b>Upper explosion limit</b>	Not applicable.	<b>Autoignition temp. (°C)</b>	Not applicable.
<b>Combustible properties</b>	No.	<b>Decomposition temp. (°C)</b>	Not applicable.

**Other information** No information available

### 10. STABILITY AND REACTIVITY

<b>Reactivity</b>	No hazardous reactions known
Chemical stability	Stable under normal ambient conditions (ambient temperature)
Possibility of hazardous reactions	No hazardous reactions known
Conditions to avoid	No information available
Incompatible materials	No information available
Hazardous decompositions products	No hazardous products known

### 11. TOXICOLOGICAL INFORMATION

<b>Acute oral toxicity:</b>	not determined
<b>Acute dermal toxicity:</b>	not determined
<b>Acute inhalational toxicity:</b>	not determined
<b>Irritant effect on eye:</b>	not determined
<b>Irritant effect on skin:</b>	not determined
<b>Sensitization:</b>	not determined
<b>Subacute toxicity:</b>	not determined
<b>Chronic toxicity:</b>	not determined
<b>Mutagenicity:</b>	not determined
<b>Reproduction toxicity:</b>	not determined
<b>Carcinogenicity:</b>	not determined
<b>Experiences made in practice:</b>	Contains fibres with diameter > 6 micrometers. The filament is not breathable (WHO). Fiber abrasion can cause mechanical skin irritation.
<b>General remarks:</b>	No classification on the basis of the calculation procedure of the preparation directive.

## ASTERIA WELDING BLANKET

### 12. ECOLOGICAL INFORMATION

**Toxicity**

**Persistence and degradability**

**Behaviour in environment compartments**

not applicable

**Behaviour in sewage plant** not applicable

**Biological degradability** not applicable

**Bioaccumulative potential** No information available

**Mobility in soil** No information available

**Results of PBT and vPvB assessment**

No information available

**Otherwise adverse effects**

The product is insoluble in water.  
Can be separated out mechanically in purifications plants.

### 13. DISPOSAL CONSIDERATIONS

**Waste treatment methods**

Waste material must be disposed of in accordance with the Directive on waste 2008/98/EC as well as other national and local regulations. It is not possible to determine a waste code for this product in accordance with the European Waste Catalogue (EWC) since it is only possible to classify it according to how it is used by the customer. The waste code is to be determined within the EU in liaison with the waste-disposal operator.

**Product**

Coordinate disposal with the authorities if necessary.

**Waste no. (recommended)**

101112  
101103

**Contaminated packaging**

Uncontaminated packaging may be taken for recycling

**Waste no. (recommended)**

150101  
150102

### 14. TRANSPORT INFORMATION

**UN number**

see section 14 in accordance with UN shipping name

**UN proper shipping name**

**Transport by land according to ADR/RID**

NO DANGEROUS GOODS

**Inland navigation (ADN)**

NO DANGEROUS GOODS

**Marine transport in accordance with IMDG**

NO DANGEROUS GOODS

**Air transport in accordance with IMDG**

NO DANGEROUS GOODS

**Transport hazard class(es)**

see section 14 in accordance with UN shipping name

**Packing group**

see section 14 in accordance with UN shipping name

**Environmental hazards**

see section 14 in accordance with UN shipping name

**Special precautions for user**

relevant information under section 6 to 8

**Transport in bulk according to Annex II of MARPOL73/78 and the IBC code**

not applicable

## ASTERIA WELDING BLANKET

### 15. REGULATORY INFORMATION

#### Safety, health and environmental regulations/legislation specific for the substance or mixture

<b>EEC-REGULATIONS:</b>	1967/548 (2008/58, 30. ATP/ 31. ATP); 1991/689 (2001/118); 1999/13; 2004/42; 648/2004; 1907/2006 (Reach); 1272/2008; 75/324/EWG (2008/47/EG
<b>TRANSPORT-REGULATIONS:</b>	DOT-Classification, ADR (2009); IMDG-Code (34. Amdt.); IATA-DGR (2010).
<b>NATIONAL REGULATIONS (GB)</b>	EH40/2005 Workplace exposure limits with amendments October 2007. CHIP 3/ CHIP 4

#### Observe employment restrictions for people

<b>OC (1999/13/CE)</b>	Not applicable Not applicable
------------------------	----------------------------------

<b>Chemical safety assessment</b>	Chemical safety assessments for substances in this mixture were not carried out
-----------------------------------	---

### 15. OTHER INFORMATION

#### Abbreviations and acronyms:

ADR = Accord européen relatif au transport international des marchandises Dangereuses par Route
RID = Règlement concernant le transport international ferroviaire de marchandises dangereuses
ADN = Accord européen relatif au transport international des marchandises dangereuses par voie de navigation intérieure
CAS = Chemical Abstracts Service
CLP = Classification, Labelling and Packaging
DMEL = Derived Minimum Effect Level
DNEL = Derived No Effect Level
EC50 = Median effective concentration
ECB = European Chemicals Bureau
EEC = European Economic Community
EINECS = European Inventory of Existing Commercial Chemical Substances
ELINCS = European List of Notified Chemical Substances
GHS = Globally Harmonized System of Classification and Labelling of Chemicals
IATA = International Air Transport Association
IBC-Code = International Code for the Construction and Equipment of Ships carrying Dangerous Chemicals in Bulk
IC50 = Inhibition concentration, 50%
IMDG = International Maritime Code for Dangerous Goods
IUCLID = International Uniform Chemical Information Database
LC50 = Lethal concentration, 50%
LD50 = Median lethal dose
MARPOL = International Convention for the Prevention of Marine Pollution from Ships
PBT = Persistent, Bioaccumulative and Toxic substance
PNEC = Predicted No-Effect Concentration
REACH = Registration, Evaluation, Authorisation and Restriction of Chemicals
TLV®/TWA = Threshold limit value – time-weighted average
TLV®STEL = Threshold limit value – short-time exposure limit
VOC = Volatile Organic Compounds
vPvB = very Persistent and very Bioaccumulative

Customs tariff	Not determined
----------------	----------------

*Disclaimer: This information is based on our present knowledge. However, this shall not constitute a guarantee for any specific product features and shall not establish a legally valid contractual relationship.*

## ASTERIA WELDING BLANKET

### TECHNICAL DATA

Test		Standard	
1. Weave		Plain	
2. Width		1000 mm	ASTM D3776-96
3. Thickness		0,75 mm	ASTM D1777-96
4. Weight		580 g/m <sup>2</sup>	ASTM D3776-96
5. Number of threads	warp	8,0 threads/cm	ASTM D3775-96
	weft	5,7 threads/cm	
6. Yarn count	warp	ET9 430 tex	
	weft	ET9 430 tex	
7. Tensile strength	warp	> 2250 N/5 cm	ASTM D5034-95
	weft	> 1216 N/5 cm	